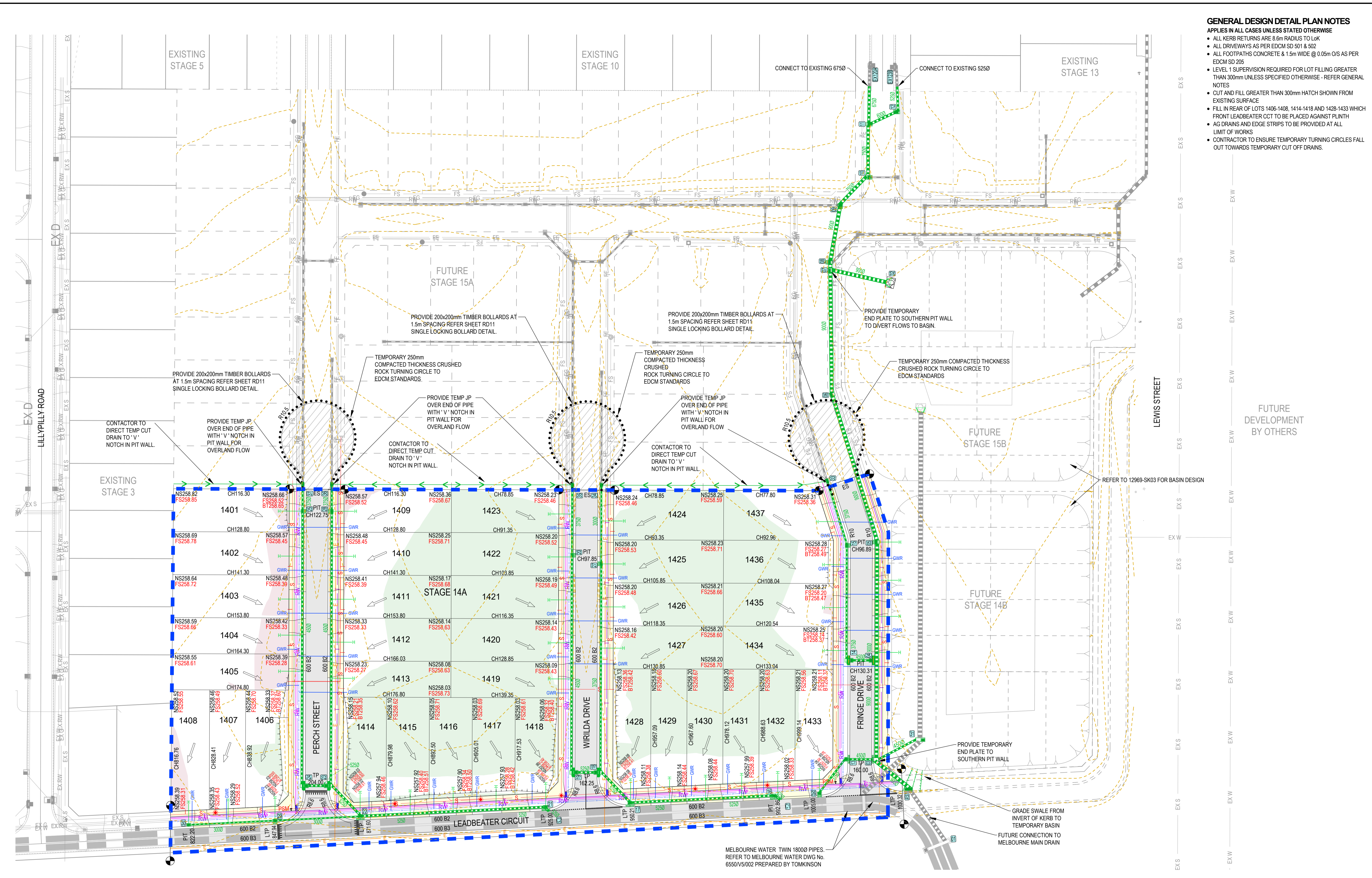


- GENERAL DESIGN DETAIL PLAN NOTES**
 APPLIES IN ALL CASES UNLESS STATED OTHERWISE
- ALL KERB RETURNS ARE 8.6m RADIUS TO LOK
 - ALL DRIVEWAYS AS PER EDM SD 501 & 502
 - ALL FOOTPATHS CONCRETE & 1.5m WIDE @ 0.05m O/S AS PER EDM SD 205
 - LEVEL 1 SUPERVISION REQUIRED FOR LOT FILLING GREATER THAN 300mm UNLESS SPECIFIED OTHERWISE - REFER GENERAL NOTES
 - CUT AND FILL GREATER THAN 300mm HATCH SHOWN FROM EXISTING SURFACE
 - FILL IN REAR OF LOTS 1406-1408, 1414-1418 AND 1428-1433 WHICH FRONT LEADBEATER CCT TO BE PLACED AGAINST PLINTH
 - AG DRAINS AND EDGE STRIPS TO BE PROVIDED AT ALL LIMIT OF WORKS
 - CONTRACTOR TO ENSURE TEMPORARY TURNING CIRCLES FALL OUT TOWARDS TEMPORARY CUT OFF DRAINS.



| | | | | | |
|-----|--------------------|-----|-----|-----|----------|
| 0 | CONSTRUCTION ISSUE | MS | MS | MM | 25/01/23 |
| A | PRELIMINARY ISSUE | MS | MS | MM | 29/11/22 |
| REV | REVISION | DES | DWG | CHK | DATE |



Tomkinson
 SURVEY • ENGINEERING • PLANNING • PROJECT MANAGEMENT

12/99-101 WESTERN AVENUE, WESTMEADOWS PH 03 8746 9988
 ABN 11 103 336 358 WWW.TOMKINSON.COM



SCALE 1:500
 LENGTHS ARE IN METRES - PAPER SIZE A1

© COPYRIGHT
 THE INFORMATION CONTAINED ON THIS DRAWING IS THE INTELLECTUAL PROPERTY OF TOMKINSON GROUP. COPYING OR USING THIS DRAWING IN WHOLE OR IN PART WITHOUT THE EXPRESS WRITTEN PERMISSION OF TOMKINSON GROUP INFRINGES COPYRIGHT.

DIAL BEFORE YOU DIG
 www.1100.com.au

COMPASS ASSURANCE
 ISO 9001 QUALITY

OORANYA ESTATE - STAGE 14A
1 LEWIS STREET, BEVERIDGE
ROAD AND DRAINAGE PLAN
DETAIL PLAN

AUTHORITY: MITCHELL SHIRE COUNCIL
 CLIENT: THE CORCORIS GROUP DEVELOPMENT PTY LTD

DWG STATUS: PROJECT & DWG No: 12969-RD04

FOR CONSTRUCTION

THIS IS AN UNCONTROLLED DOCUMENT AND WILL NOT BE UPDATED. IT IS THE RESPONSIBILITY OF THE USER TO CONFIRM THAT THIS IS A CURRENT COPY AND SUITABLE FOR THE PROPOSED USE. THIS SHEET MUST BE READ IN CONJUNCTION WITH ALL SHEETS OF THIS SET AND ANY ACCOMPANYING DOCUMENTS.
 PLOT DATE: 25/01/2023 FILE: C:\12\DD\DATA\TOMKBG0-12DS01\12969 - TCG CONSTRUCTIONS_BEVERIDGE_23\12969-RD04.DWG