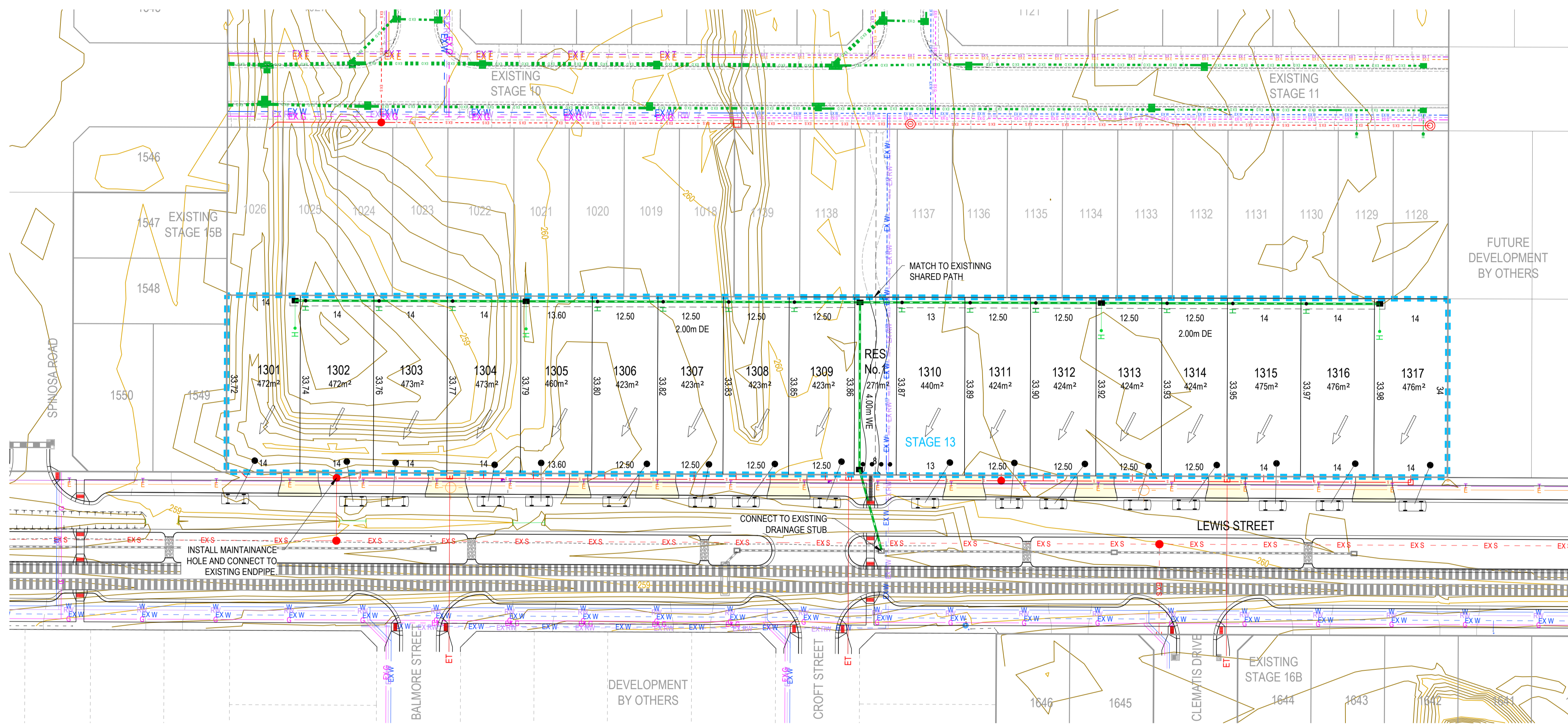
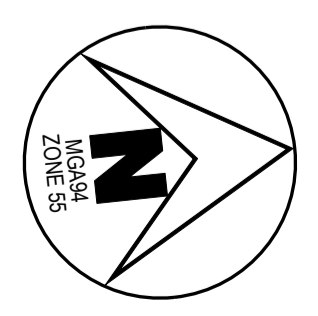


NOTE:
ALL PROPOSED SERVICES RUNNING IN LEWIS STREET ARE TO BE INSTALLED AS PART OF THE LEWIS STREET WORKS IN KIND DESIGN PROPOSED BY TOMKINSON. REFER 14000.EXR3 DRAWINGS.

NOTE:
EXISTING OH ELECTRICITY TO BE REMOVED AS PART OF LEWIS STREET UPGRADE WORKS PRIOR TO CONSTRUCTION OF STAGE 13.



REV	DESCRIPTION	DES	DWG	CHK	DATE
D	ISSUED FOR INFORMATION ONLY	KM	KM	MM	14/09/2023
C	BOLLARDS & TGS1 ADDED	KM	KM	MM	24/11/2021
B	ISSUED TO COUNCIL	KM	KM	MM	18/11/2021
A	ISSUED TO COUNCIL	KM	KM	AR	2020



Tomkinson
SURVEY • ENGINEERING • PLANNING • PROJECT MANAGEMENT

12/99-101 WESTERN AVENUE, WESTMEADOWS PH 03 8746 9988
ABN 11 103 336 358 WWW.TOMKINSON.COM



SCALE 1:500 @ A1, 1:1,000 @ A3
LENGTHS ARE IN METRES

© COPYRIGHT
THE INFORMATION CONTAINED ON THIS DRAWING IS THE INTELLECTUAL PROPERTY OF TOMKINSON GROUP. COPYING OR USING THIS DRAWING IN WHOLE OR IN PART WITHOUT THE EXPRESS WRITTEN PERMISSION OF TOMKINSON GROUP INFRINGES COPYRIGHT.



**OORANYA ESTATE - STAGE 13
BEVERIDGE
FUNCTIONAL LAYOUT PLAN
LAYOUT PLAN & PARKING PLAN**

AUTHORITY: MITCHELL SHIRE COUNCIL
CLIENT: THE CORCORIS GROUP DEVELOPMENTS PTY LTD

DWG STATUS: PROJECT & DWG No: **PRELIMINARY** S1488.13-FLP03

NOTE: THIS IS AN UNCONTROLLED DOCUMENT AND WILL NOT BE UPDATED. IT IS THE RESPONSIBILITY OF THE USER TO CONFIRM THAT THIS IS A CURRENT COPY AND SUITABLE FOR THE PROPOSED USE. THIS SHEET MUST BE READ IN CONJUNCTION WITH ALL SHEETS OF THIS SET AND ANY ACCOMPANYING DOCUMENTS.
PLOT DATE: 14/09/2023 FILE: C:\112D\DATA\100\K660-125D\01S1488.13-100 CONSTRUCTIONS PLY LTD, BEVERIDGE_1516\ENG\100\CAD\CURRENT\151488.13.FLP.DWG