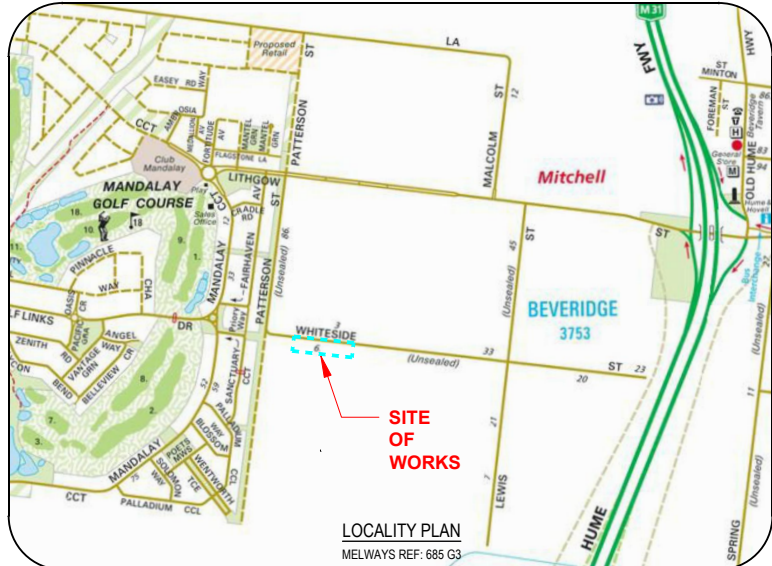


OORANYA ESTATE, STAGE 9a

ROADS & DRAINAGE CONSTRUCTION PLANS

WHITESIDE STREET - BEVERIDGE



DRAWING LIST

ROAD & DRAINAGE CONSTRUCTION PLANS

- S148809aR01 LOCALITY PLAN & GENERAL NOTES
- S148809aR02 EXISTING CONDITIONS & SURVEY STATION/TBMS
- S148809aR03 DETAIL PLAN
- S148809aR04 CUT & FILL DEPTH RANGES & LOT LEVELS
- S148809aR05 PAVEMENT DETAILS

LEGEND

	EXISTING SHRUBS / TREES		PROPOSED SEWER AND MANHOLE
	PROPOSED STREET TREE		PROPOSED SEWER RISING MAN
	SHRUBS / TREES TO BE REMOVED		PROPOSED PRIVATE SEWER
	SIGN		EXISTING SEWER & MANHOLE
	TELCO PILLA		PROPOSED WATER MAN
	TELCO PITS		PROPOSED PRIVATE WATER MAN
	ELECTRICITY LIGHT & POLE		PROPOSED RECYCLED WATER MAN
	PROPOSED KERB & CHANNEL		EXISTING WATER MAN, FIRE PLUG AND VALVE
	EXISTING KERB & CHANNEL		PROPOSED FUTURE WATER
	PROPOSED DRAIN / PIT / I.S.		PROPOSED ELECTRICITY MAIN
	EXISTING DRAIN / PIT		PROPOSED PRIVATE ELECTRICITY MAIN
	PROPOSED HOUSE DRAIN / EASEMENT CONNECTION		EXISTING ELECTRICITY MAIN & PIT
	FUTURE DRAIN / PIT		PROPOSED FUTURE ELECTRICITY
	FENCE LINE		PROPOSED GAS MAIN
	INVERT (DESIGN) (EXISTING)		PROPOSED PRIVATE GAS MAN
	EDGE OF SEAL / EDGE OF BITUMEN (DESIGN) (EXISTING)		EXISTING GAS MAIN
	TOP OF BANK (DESIGN) (EXISTING)		PROPOSED FUTURE GAS
	BOTTOM OF BANK		PROPOSED TELCO MAN
	PROPOSED TITLE BOUNDARY & SITE TITLE BOUNDARY		PROPOSED PRIVATE TELCO MAN
	PROPOSED FUTURE TITLE BOUNDARY		EXISTING TELCO CABLE
	PREVIOUS STAGE TITLE BOUNDARY		PROPOSED FUTURE TELCO
	PROPOSED OR EXISTING EASEMENT		PROPOSED CATCH DRAIN
	HOUSE		PROPOSED AG DRAIN
	PROPOSED ELEC / TELSTRA CONDUIT & PIT		
	PROPOSED GAS & WATER CONDUIT		
	PROPOSED FLAT TOP SPEED HUMP		



REFER TO ELECTRICAL AND TELSTRA PLANS FOR SERVICE AND CONDUIT DETAILS

WARNING
BEWARE OF UNDERGROUND SERVICES
THE LOCATIONS OF UNDERGROUND SERVICES ARE APPROXIMATE ONLY AND THEIR EXACT POSITION SHOULD BE PROVEN ON SITE. NO GUARANTEE IS GIVEN THAT ALL EXISTING SERVICES ARE SHOWN.

TABLE OF OFFSETS FOR SERVICES

STREET	GAS		WATER		ELEC		TELCO	
	OFFSET	SIDE	OFFSET	SIDE	U/G CABLE	OFFSET	SIDE	
WHITESIDE STREET	2.1m	NORTH	3.3m	NORTH	2.4m	SOUTH	1.9m	SOUTH

GENERAL NOTES

PRIOR TO THE COMMENCEMENT OF WORKS

- THE CONTRACTOR MUST NOTIFY THE RELEVANT AUTHORITY 7 DAYS PRIOR TO COMMENCEMENT OF CONSTRUCTION OF THE RELEVANT WORKS.
- THE CONTRACTOR MUST OBTAIN ALL NECESSARY PERMITS FROM THE MUNICIPALITY & VICROADS FOR ANY WORKS UNDERTAKEN WITHIN AN EXISTING ROAD RESERVE PRIOR TO THE COMMENCEMENT OF WORKS.
- THE CONSULTANT HAS MADE EVERY REASONABLE ATTEMPT TO LOCATE EXISTING SERVICES AND HAS SHOWN THESE ON THE DRAWINGS. THE CONTRACTOR SHALL TAKE PHOTOGRAPHS AND PROVIDE A WRITTEN REPORT DETAILING THE CONDITION REGARDING ALL EXISTING INFRASTRUCTURE WHICH THEY ARE INTERFACING WITH, OR OTHERWISE HAVING AN IMPACT ON.
- PRIOR TO COMMENCING WORKS THE CONTRACTOR SHALL VERIFY THE LOCATION OF ALL SERVICES BY SITE SURVEY (INSPECTION AND CONSULTATION WITH ALL RELEVANT SERVICING AUTHORITIES). THE CONTRACTOR SHALL BE RESPONSIBLE FOR ANY DAMAGE TO EXISTING SERVICES, WHETHER SHOWN OR NOT.
- THE CONTRACTOR MUST CONTACT DIAL BEFORE YOU DIG (CALL 1100), OR VISIT THE DIAL BEFORE YOU DIG WEBSITE PRIOR TO COMMENCING WORKS AND SATISFY THEMSELVES THAT THERE ARE NO SERVICES WITHIN THE VICINITY OF THE WORK AREA.
- NO WORK IS TO COMMENCE BEFORE THE CONTRACTOR HAS ASCERTAINED WHAT UNDERGROUND SERVICES ARE PRESENT.
- CONTRACTOR MUST FOLLOW THE 'NO GO ZONE' SAFETY PROCEDURES AT ALL TIMES, WHICH ARE AVAILABLE FROM ALL UTILITY AND TELECOMMUNICATIONS COMPANIES, INCLUDING THE OFFICE OF THE CHIEF ELECTRICAL INSPECTOR, THE OFFICE OF GAS SAFETY AND WORKSAFE VICTORIA.
- IF THESE SAFETY PROCEDURES CANNOT BE COMPLIED WITH THEN NO WORK IS TO BE UNDERTAKEN WITHOUT PERMISSION FROM THE UTILITY COMPANY.
- THE CONTRACTOR MUST PREPARE A PROJECT MANAGEMENT PLAN OTHERWISE CALLED A CONSTRUCTION OR SITE MANAGEMENT PLAN AND HAVE IT APPROVED BY BOTH COUNCIL & THE SUPERINTENDENT PRIOR TO THE COMMENCEMENT OF ANY WORKS. THIS PROJECT MANAGEMENT PLAN IS TO INCORPORATE THE FOLLOWING AT A MINIMUM AND IN ACCORDANCE WITH ANY LEGISLATION REQUIREMENTS:
 - OCCUPATIONAL HEALTH & SAFETY PROCEDURES
 - SITE STAFFING INCLUDING CONTACT DETAILS
 - TRAFFIC MANAGEMENT PLAN

CONSTRUCTION SETOUT

- ALL LEVELS ARE TO A.H.D. AND ARE REFERENCED TO THE T.B.M. INDICATED.
- COORDINATION OF THIS DESIGN USES MGA 94. CORRECT AS OF THE DATE OF THESE PLANS. FROM 1ST JANUARY 2017, MGA 2020 MAY BE IN STANDARD USE AND WILL DIFFER IN POSITION BY AROUND 1.8 METRES FROM THIS DOCUMENT.
- NO TM CAN BE USED WITHOUT FIRST PROVING IT TO BE CORRECT TO A SECOND TBM. NO HORIZONTAL SETOUT CONTROL CAN BE USED WITHOUT FIRST PROVING IT TO BE CORRECT TO A THIRD KNOWN POINT. THE CONSULTING SURVEYOR IS TO BE NOTIFIED OF ANY DISCREPANCIES IMMEDIATELY. TITLE PEGS AND T.B.M.'s TO BE RE-ESTABLISHED BY A LICENSED SURVEYOR IF FOUND TO BE MISSING.
- IF USING GNSS / GPS TO SETOUT FOR CONSTRUCTION PLEASE NOTE:
 - GNSS HAS REDUCED VERTICAL PRECISION COMPARED TO TRADITIONAL SURVEY METHODS.
 - ONLY USE A SINGLE POINT CALIBRATION FOR THE VERTICAL THEN TEST TO AT LEAST 1 OTHER STATED TBM BEFORE PROCEEDING.
 - IF YOU HAVE ANY QUERIES OR CONCERNS CONTACT THE CONSULTING SURVEYOR.

SITE MANAGEMENT DURING CONSTRUCTION

- THE SUPERINTENDENT IS RESPONSIBLE FOR THE DESIGN AND MANAGEMENT OF THE CONSTRUCTION WORKS. ANY PROBLEMS ARISING DURING CONSTRUCTION SHALL BE DIRECTED TO THE SUPERINTENDENT.
- ALL WORKS SHALL BE CONSTRUCTED IN ACCORDANCE WITH THE ENGINEERING DESIGN & CONSTRUCTION MANUAL AND ANY OTHER RELEVANT AUTHORITY SPECIFICATIONS. A COPY OF THE EDM CAN BE FOUND AT WWW.VPA.VIC.GOV.AU *IF YOU HAVE ANY ISSUES INTERPRETING THE MANUAL CONTACT THE SUPERINTENDENT.
- ALL WORKS MUST ABIDE BY THE APPROVED CONSTRUCTION MANAGEMENT PLAN AND MUST COMPLY WITH THE RECOMMENDATIONS OF THE ENVIRONMENT PROTECTION AUTHORITY PUBLICATION 'CONSTRUCTION TECHNIQUES FOR SEDIMENT POLLUTION CONTROL' (PUBLICATION NO 275). APPROPRIATE SILTATION CONTROL IS TO BE CARRIED OUT DURING THE CONSTRUCTION AND MAINTENANCE PERIOD.
- BEFORE COMMENCING ANY EXCAVATION WORKS OF 1.5m DEPTH OR GREATER, THE CONTRACTOR IS REQUIRED TO SUBMIT THE REQUIRED NOTIFICATION TO WORKSAFE VICTORIA. THE NOTIFICATION MUST BE RECEIVED BY THE AUTHORITY

PROTECTION OF VEGETATION

- NO WORKS ARE TO BE UNDERTAKEN WITHIN THE DRIP ZONE (CANOPY) OF AN EXISTING TREE UNLESS APPROVED BY THE RESPONSIBLE AUTHORITY.
- MACHINERY IS NOT TO BE DRIVEN OVER OR PARKED WITHIN THE DRIP ZONE OF ANY TREE.
- ALL EXCAVATIONS OF DEPTH 1.5m OR GREATER MUST COMPLY WITH LEGISLATION ENFORCED BY WORKSAFE VICTORIA. A NOTICE OF INTENTION TO COMMENCE EXCAVATION MUST BE SUBMITTED TO YOUR LOCAL WORKSAFE OFFICE.
- ALL LOTS ARE TO ACHIEVE A MINIMUM CROSS FALL OF 1 IN 150 (0.67%) TO A LEGAL POINT OF DISCHARGE (DRAINAGE POINT OR ROAD RESERVE) UNLESS STATED OTHERWISE.
- RESERVES TO BE FREE DRAINING AND TO BE LEFT IN A CONDITION SATISFACTORY TO THE SUPERINTENDENT.
- ALL KERB & CHANNEL IS SM2 (EDCM 302) UNLESS STATED OTHERWISE.
- ALL ASPHALT ROAD SEALS ARE TO BE 7mm TYPE 'N' UNLESS STATED OTHERWISE.

EARTHWORKS

- ALL EARTHWORKS ARE TO BE UNDERTAKEN IN ACCORDANCE WITH AS 3798 (2007) - GUIDELINES ON EARTHWORKS FOR COMMERCIAL AND RESIDENTIAL DEVELOPMENTS.
- ALL FILLING WITHIN AREAS OF PROPOSED ROAD PAVEMENT IS TO ACHIEVE A MINIMUM COMPACTION OF 96% STANDARD.
- ALL FILLING WITHIN OTHER AREAS IS TO ACHIEVE A MINIMUM COMPACTION OF 95% STANDARD.
- ALL FILLING IN EXCESS OF 300mm DEPTH IS TO BE CARRIED OUT UNDER LEVEL 1 SUPERVISION UNLESS DIRECTED OTHERWISE. FILL AREAS ARE TO BE STRIPPED OF TOPSOIL & FILLED USING APPROVED CLAY FILL. TOPSOIL IS TO BE REPLACED NO MORE THAN 150mm THICK TO OBTAIN FINAL FILL LEVELS AS SHOWN ON PLANS. ALL FILLING TO BE CARRIED OUT IN 150mm LAYERS AND COMPACTED AS DETAILED ABOVE IN ACCORDANCE WITH AS3798-1996 (GUIDELINES ON EARTHWORKS FOR COMMERCIAL AND RESIDENTIAL DEVELOPMENTS), ON COMPLETION THE CONTRACTOR SHALL PRESENT A LEVEL 1 TYPED REPORT NOMINATING THE EXTENT OF FILL PLACED, ITS CONFORMANCE WITH THE SPECIFICATION AND ITS CLASSIFICATION AS 'CONTROLLED FILL'. IF ANY SUBSTANDARD FILLING IS ENCOUNTERED ON THE SITE IT MUST BE REMOVED AND REPLACED WITH VERIFICATION PROVIDED TO THE SUPERVISING ENGINEER. A GEO-TECHNICAL REPORT MUST BE SUBMITTED SHOWING DETAILS OF DEPTH, TYPE OF MATERIAL AND DENSITY OF THE FILL AREAS CONCERNED.
- THE SUPERINTENDENT IS TO BE ADVISED OF ANY FILLING THAT ACHIEVES A DEPTH OF 300mm OR GREATER.
- THE CONTRACTOR IS RESPONSIBLE FOR ENSURING THAT ALL IMPORTED FILL MATERIAL, INCLUDING TOPSOIL, SATISFIES THE DESCRIPTION FOR CLEAN FILL MATERIAL IN EPA BULLETIN PUBLICATION NO. 448 (SEPT 95) AND SUBSEQUENT REVISIONS. THE CONTRACTOR SHALL PROVIDE VERIFICATION INCLUDING TEST CERTIFICATES TO THE SUPERVISING ENGINEER.
- ALL TRENCHES ARE TO ACHIEVE THE SPECIFIED COMPACTION RESULTS WITHOUT EXCEPTION. THE SUPERINTENDENT RESERVES THE RIGHT TO REQUIRE COMPACTION TESTING BY A NATA APPROVED LABORATORY AT THE CONTRACTORS EXPENSE.
- ALL EXCAVATIONS OF DEPTH 1.5m OR GREATER MUST COMPLY WITH LEGISLATION ENFORCED BY WORKSAFE VICTORIA. A NOTICE OF INTENTION TO COMMENCE EXCAVATION MUST BE SUBMITTED TO YOUR LOCAL WORKSAFE OFFICE.
- ALL LOTS ARE TO ACHIEVE A MINIMUM CROSS FALL OF 1 IN 150 (0.67%) TO A LEGAL POINT OF DISCHARGE (DRAINAGE POINT OR ROAD RESERVE) UNLESS STATED OTHERWISE.
- RESERVES TO BE FREE DRAINING AND TO BE LEFT IN A CONDITION SATISFACTORY TO THE SUPERINTENDENT.
- ALL KERB & CHANNEL IS SM2 (EDCM 302) UNLESS STATED OTHERWISE.
- ALL ASPHALT ROAD SEALS ARE TO BE 7mm TYPE 'N' UNLESS STATED OTHERWISE.

ROAD WORKS AND FOOTPATHS

- ALL KERB & CHANNEL IS SM2 (EDCM 302) UNLESS STATED OTHERWISE.
- ALL ASPHALT ROAD SEALS ARE TO BE 7mm TYPE 'N' UNLESS STATED OTHERWISE.

STORMWATER DRAINAGE AND SERVICE CONDUIT NOTES

- ALL EASEMENT DRAINAGE PIPES ARE 1.0m OFFSET TITLE BOUNDARY UNLESS DIMENSIONED OTHERWISE.
- ALL EASEMENT DRAINAGE PITS ARE TO BE 1.0m PAST TITLE BOUNDARY UNLESS DIMENSIONED OTHERWISE.
- ALL PROPERTY DRAINAGE CONNECTIONS FROM ROAD RESERVES ARE TO ENTER THE PROPERTY 1.0m OS SIDE BOUNDARY ON THE LOW SIDE WITH 0.5m COVER UNLESS NOTED OTHERWISE.
- ALL STORMWATER AND CONDUIT TRENCHES UNDER ROAD PAVEMENT, KERB & CHANNEL AND FOOTPATH SHALL BE BACKFILLED IN ACCORDANCE WITH THE DM UNLESS STATED OTHERWISE.
- REFER TO THE CERTIFIED PLAN OF SUBDIVISION FOR ALL EASEMENT WIDTHS, DO NOT SCALE FROM DRAWING.
- STORMWATER DRAINS SHALL BE RCP OR PVC CLASS 5 UNLESS OTHERWISE SHOWN. RCP PIPES ABOVE 750mm DIA SHALL BE RUBBER RING JOINTED CLASS 2, RCP PIPES ABOVE 1500mm DIA SHALL BE FLUSH JOINTED CLASS 2.
- RCP FLUSH JOINTED PIPES ARE TO HAVE EXTERNAL SEALING BANDS.

CONSTRUCTION HOLD POINTS

- CONSTRUCTION HOLD POINTS ARE TO BE IN ACCORDANCE WITH THE INFRASTRUCTURE DESIGN MANUAL.

EMERGENCY CONTACTS

- THE PROJECT AREA CONTAINS THE FOLLOWING SERVICES FOR ASSISTANCE IN EMERGENCY CONTACT:

SERVICE	AUTHORITY & CONTACT	TELEPHONE
DRAINAGE	MITCHELL COUNCIL	03 5734 6200
ELECTRICITY	SP AUSNET	180 088 208
GAS	APA GROUP	08 8115 4500
TELESTRA	180 853 935	
SEWER & WATER	YARRA VALLEY WATER	03 9872 1456
- IN ANY EMERGENCY IF YOU BELIEVE LIFE OR PROPERTY IS THREATENED DO NOT HESITATE TO CONTACT STATE EMERGENCY SERVICES ON TELEPHONE 000.

E	APPROVED FOR CONSTRUCTION	JM	AR	29/07/20
D	AMENDED LOT 963 DRIVEWAY	JM	AR	29/07/20
C	AMENDED GENERAL NOTES	SM	AR	23/01/20
B	UPDATED EXTERNAL ROADS DESIGN	SM	AR	17/01/20
A	AS SUBMITTED TO COUNCIL	AR	NB	26/08/19

REV	REVISION	DES	DWG	CHK	DATE
-----	----------	-----	-----	-----	------



HEAD OFFICE: 57 MYERS STREET BENDIGO 3550 PH 03 5445 8700
ABN 11 103 336 358 WWW.TOMKINSON.COM

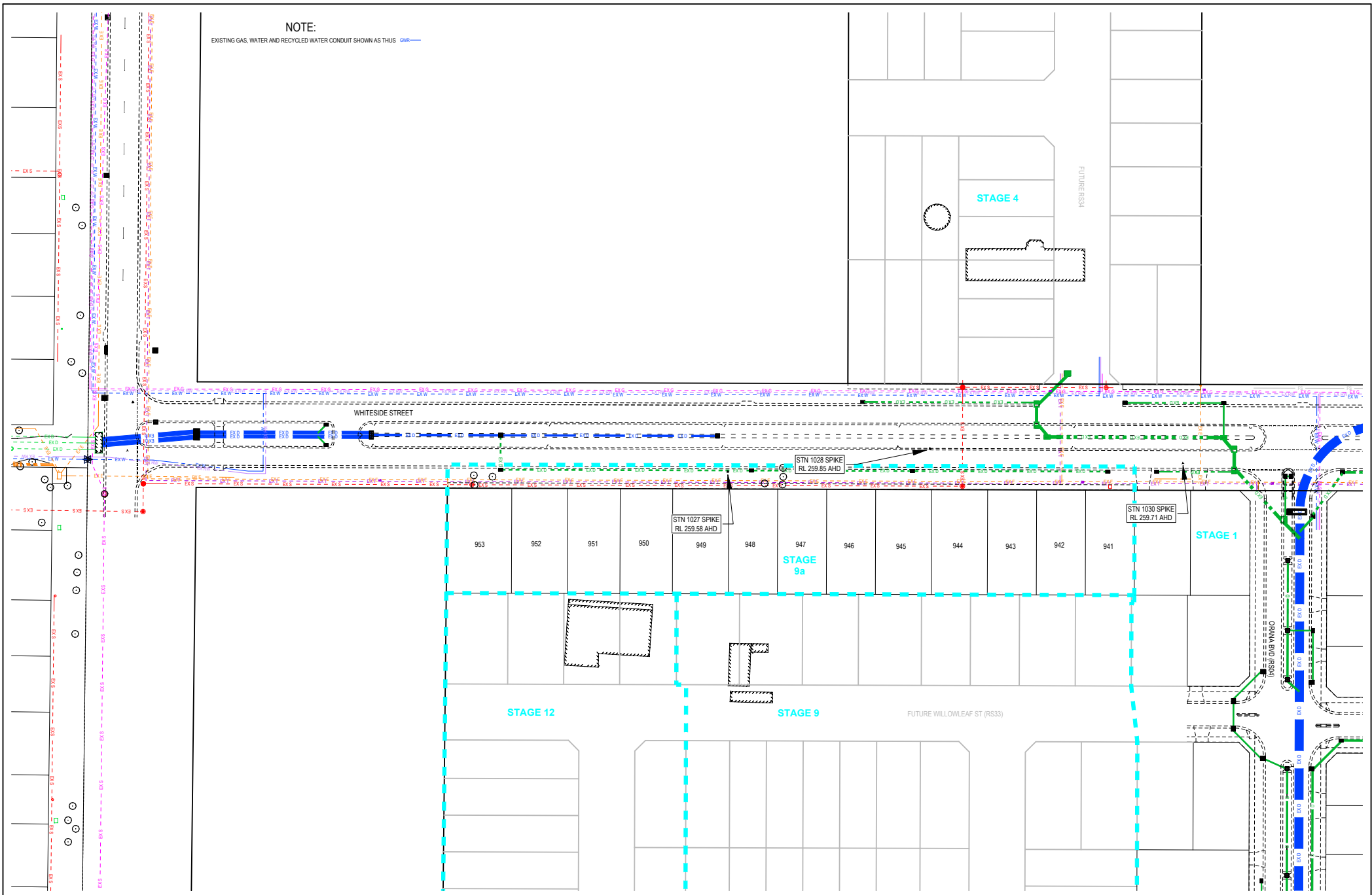
© COPYRIGHT
THE INFORMATION CONTAINED ON THIS DRAWING IS THE INTELLECTUAL PROPERTY OF TOMKINSON GROUP. COPYING OR USING THIS DRAWING IN WHOLE OR IN PART WITHOUT THE EXPRESS WRITTEN PERMISSION OF TOMKINSON GROUP HEREBY FORBIDDEN.
COPYRIGHT

SCALE 1:1
LENGTHS ARE IN METRES - PAPER SIZE A3

FS20488

OORANYA ESTATE - STAGE 9a
WHITESIDE ST - BEVERIDGE
ROADS & DRAINAGE CONSTRUCTION PLANS
LOCALITY PLAN & GENERAL NOTES
MITCHELL SHIRE COUNCIL #R#F
THE CORCORIS GROUP DEVELOPMENTS PTY LTD
PROJECT & DWG NO: REV:
DWG STATUS:
FOR CONSTRUCTION S148809AR01/05 E

THIS IS AN UNCONTROLLED DOCUMENT AND WILL NOT BE UPDATED. IT IS THE RESPONSIBILITY OF THE USER TO CONFIRM THAT THIS IS A CURRENT COPY AND SUITABLE FOR THE PROPOSED USE. THIS SHEET MUST BE READ IN CONJUNCTION WITH ALL SHEETS OF THIS SET AND ANY ACCOMPANYING DOCUMENTS. PLOT DATE: 11/08/2020 FILE C:\12\DATA\TOMKINSON\DESIGN\CAD\STAGE 9A\8898A_R&D CONSTRUCTION PLANS REV.DWG



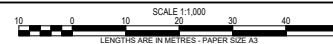
NOTE:
EXISTING GAS, WATER AND RECYCLED WATER CONDUIT SHOWN AS THUS —

E APPROVED FOR CONSTRUCTION
D AMENDED LOT 963 DRIVEWAY
C AMENDED GENERAL NOTES
B UPDATED EXTERNAL ROADS DESIGN
A AS SUBMITTED TO COUNCIL

JM AR 29/07/20
JM AR 29/07/20
SM AR 23/01/20
SM AR 17/01/20
AR JM NB 26/08/19



Tomkinson Group
HEAD OFFICE: 57 MYERS STREET BENDIGO 3550 PH 03 5445 8700
ABN 11 103 336 358 WWW.TOMKINSON.COM



© COPYRIGHT
THE INFORMATION CONTAINED ON THIS DRAWING IS THE INTELLECTUAL PROPERTY OF TOMKINSON GROUP. COPYING OR USING THIS DRAWING IN WHOLE OR IN PART WITHOUT THE EXPRESS WRITTEN PERMISSION OF TOMKINSON GROUP HEREBY FORBIDDEN.
ISO 9001:2015 Quality Management
FS20488



OORANYA ESTATE - STAGE 9a
WHITESIDE ST - BEVERIDGE
ROADS & DRAINAGE CONSTRUCTION PLANS
EXISTING CONDITIONS & SURVEY STATIONS/TBM'S
MITCHELL SHIRE COUNCIL #R#F
THE CORCORIS GROUP DEVELOPMENTS PTY LTD
DWG STATUS: PROJECT & DWG No: REV:
FOR CONSTRUCTION S148809AR02/ 05 E

NOTE: THIS IS AN UNCONTROLLED DOCUMENT AND WILL NOT BE UPDATED. IT IS THE RESPONSIBILITY OF THE USER TO CONFIRM THAT THIS IS A CURRENT COPY AND SUITABLE FOR THE PROPOSED USE. THIS SHEET MUST BE READ IN CONJUNCTION WITH ALL SHEETS OF THIS SET AND ANY ACCOMPANYING DOCUMENTS.
PLOT DATE: 11/09/2020 FILE: C:\12\DATA\TOMKINSON\1205\151488 - THE CORCORIS GROUP DEVELOPMENT PTY LTD, BEVERIDGE, 9\ENGINEERING\DESIGN\CAD\STAGE 9A\148809A.RD CONSTRUCTION PLANS REV.DWG

GENERAL CONSTRUCTION PLAN NOTES

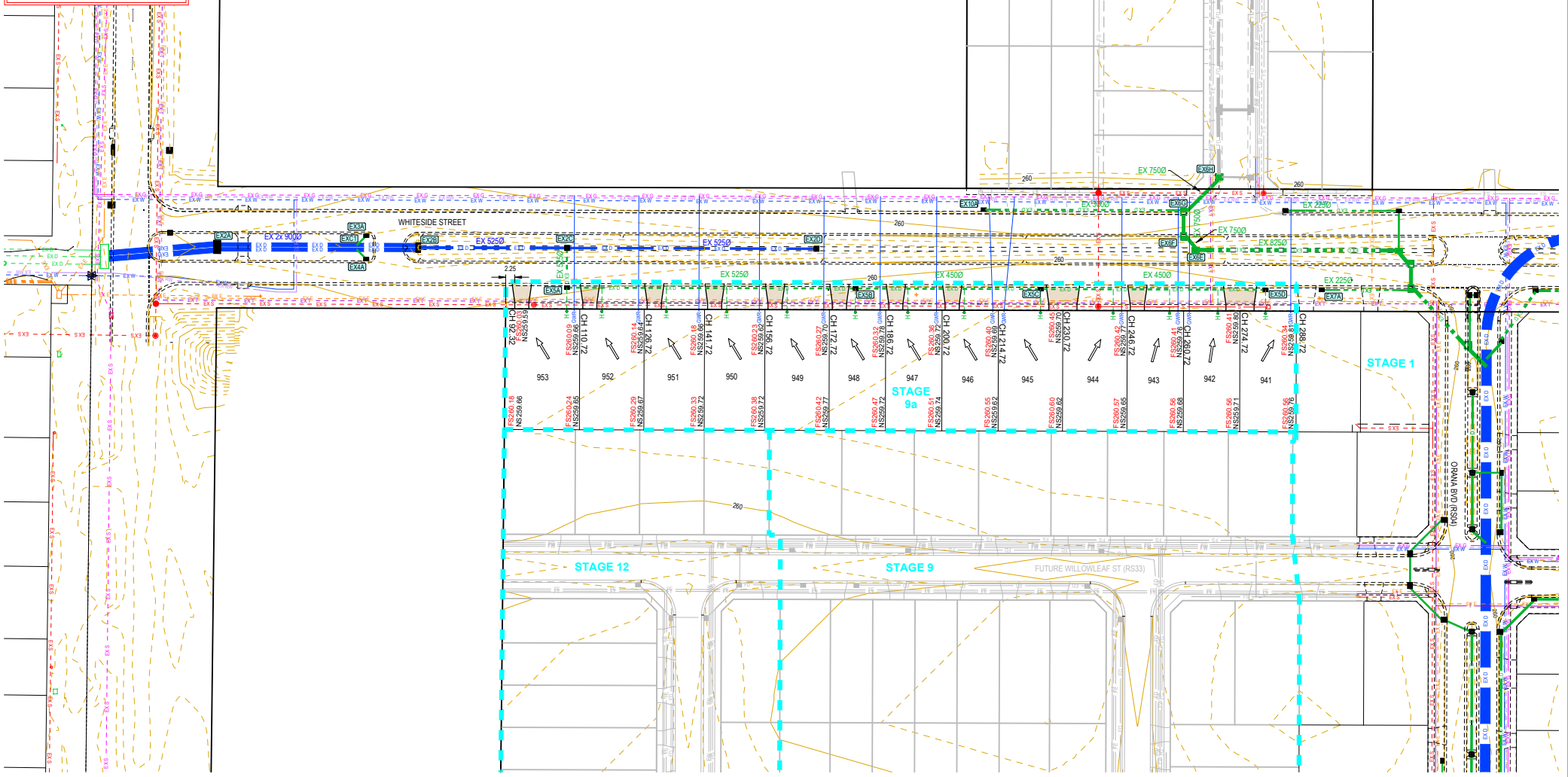
- APPLIES IN ALL CASES UNLESS STATED OTHERWISE
- KERB TYPES:
 - LOCAL STREETS = S/M2 AS PER EDM 302
 - ALL SINGLE & DOUBLE DRIVEWAYS AS PER EDM 401 & 502
 - ALL FOOTPATHS CONCRETE & 1.5m WIDE @ 0.05m OS BL AS PER EDM 401
 - PROPERTY DRAINAGE INLETS AS PER EDM 701 - 703
 - CONNECTIONS FROM ROAD RESERVE TO BE 3.5m OS ON NON DRIVEWAY SIDE OR 5.5m OS ON DRIVEWAY SIDE
 - CONNECTIONS AT REAR OF LOTS TO BE 2.5m OS WITH SEWER OS OR 1.0m OS IF NO SEWER OS
 - OFFSET WILL VARY FOR PIT CONNECTION
 - ALL EASEMENT DRAINAGE PIPES & FITS ARE 1.0m OS REAR & SIDE BOUNDARIES
 - CONTOUR INTERVAL 0.2m @ 1:750 WHERE SHOWN

WARNING

BEWARE OF UNDERGROUND SERVICES
THE LOCATIONS OF UNDERGROUND SERVICES ARE APPROXIMATE ONLY AND THEIR EXACT POSITION SHOULD BE PROVEN ON SITE. NO GUARANTEE IS GIVEN THAT ALL EXISTING SERVICES ARE SHOWN.

NOTE:

- EXISTING GAS, WATER AND RECYCLED WATER CONDUIT SHOWN AS THIS
- EXISTING LEVELS AT FRONT OF STAGE 9a LOTS RELATE TO LEVELS PRIOR TO CONSTRUCTION OF WHITESIDE ST



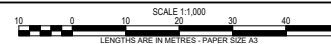
- E APPROVED FOR CONSTRUCTION
- D AMENDED LOT 953 DRIVEWAY
- C AMENDED GENERAL NOTES
- B UPDATED EXTERNAL ROADS DESIGN
- A AS SUBMITTED TO COUNCIL

REVISION

•	JM	AR	29/07/20
•	JM	AR	29/07/20
•	SM	AR	23/01/20
•	SM	AR	17/01/20
•	AR	JM	NB 26/08/19
DES	DWG	CHK	DATE



HEAD OFFICE: 57 MYERS STREET BENDIGO 3550 PH 03 5445 8700
ABN 11 103 336 358 WWW.TOMKINSON.COM



© COPYRIGHT
THE INFORMATION CONTAINED ON THIS DRAWING IS THE INTELLECTUAL PROPERTY OF TOMKINSON GROUP. COPYING OR USING THIS DRAWING IN WHOLE OR IN PART WITHOUT THE EXPRESS WRITTEN PERMISSION OF TOMKINSON GROUP HEREBY FORBIDDEN.
COPYRIGHT

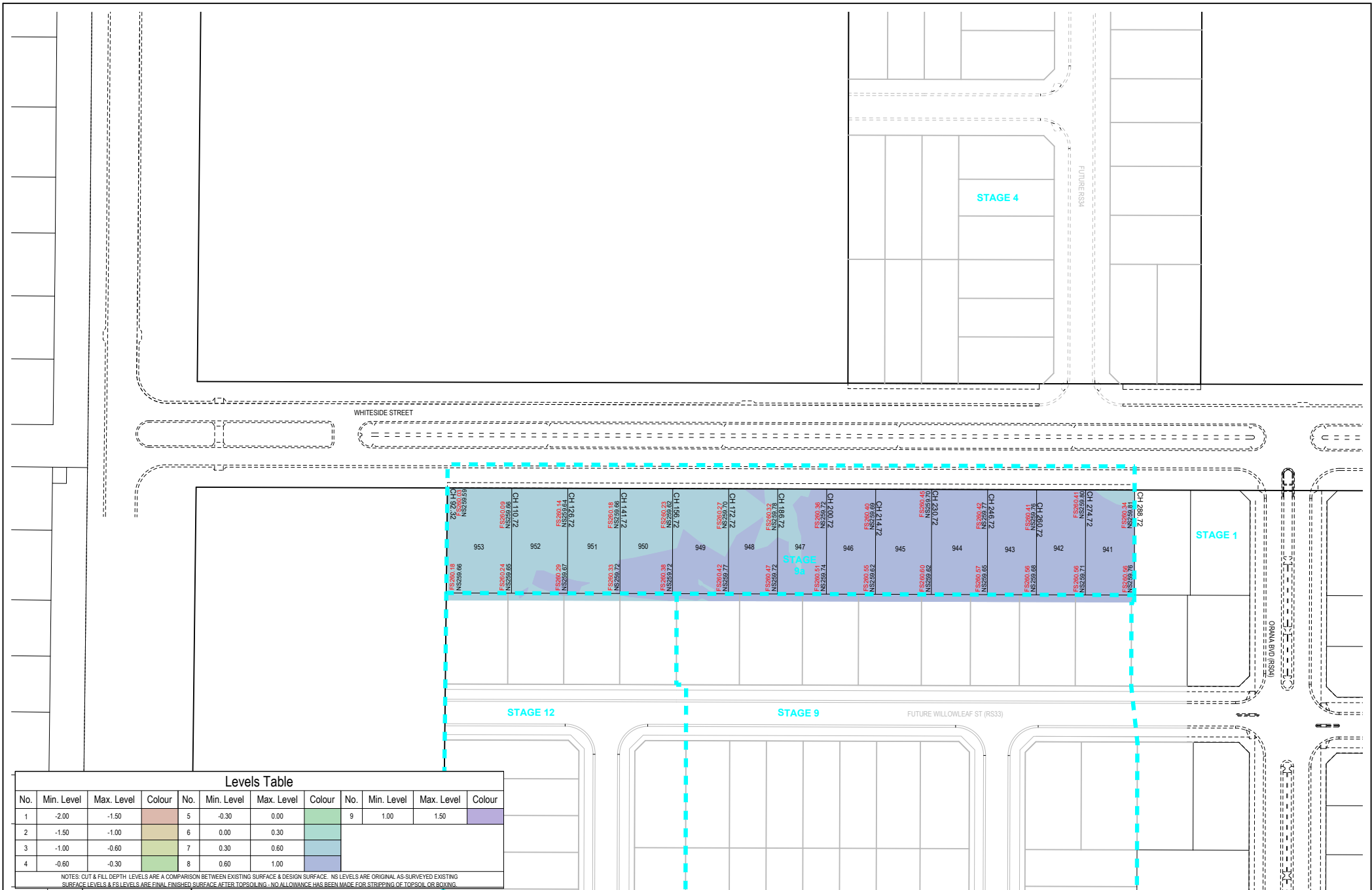


OORANYA ESTATE - STAGE 9a
WHITESIDE ST - BEVERIDGE
ROADS & DRAINAGE CONSTRUCTION PLANS
DETAIL PLAN

MITCHELL SHIRE COUNCIL #REF
THE CORCORIS GROUP DEVELOPMENTS PTY LTD

DWG STATUS: PROJECT & DWG No: **FOR CONSTRUCTION** S148809AR03/ 05 E

NOTE: THIS IS AN UNCONTROLLED DOCUMENT AND WILL NOT BE UPDATED. IT IS THE RESPONSIBILITY OF THE USER TO CONFIRM THAT THIS IS A CURRENT COPY AND SUITABLE FOR THE PROPOSED USE. THIS SHEET MUST BE READ IN CONJUNCTION WITH ALL SHEETS OF THIS SET AND ANY ACCOMPANYING DOCUMENTS.
NOT DATE: I:\1092\2021\FILE C:\12\DATA\TOM\656-1205\151488 - THE CORCORIS GROUP DEVELOPMENT PTY LTD, BEVERIDGE, 9\ENGINEERING\DESIGN\CAD\STAGE 9AS\148809A.RD CONSTRUCTION PLANS REV.DWG



Levels Table

No.	Min. Level	Max. Level	Colour	No.	Min. Level	Max. Level	Colour	No.	Min. Level	Max. Level	Colour
1	-2.00	-1.50	Red	5	-0.30	0.00	Green	9	1.00	1.50	Purple
2	-1.50	-1.00	Orange	6	0.00	0.30	Light Green				
3	-1.00	-0.60	Yellow	7	0.30	0.60	Light Blue				
4	-0.60	-0.30	Light Green	8	0.60	1.00	Light Purple				

NOTES: CUT & FILL DEPTH LEVELS ARE A COMPARISON BETWEEN EXISTING SURFACE & DESIGN SURFACE. NS LEVELS ARE ORIGINAL AS-SURVEYED EXISTING SURFACE LEVELS & FS LEVELS ARE FINAL FINISHED SURFACE AFTER TOPSOILING. NO ALLOWANCE HAS BEEN MADE FOR STRIPPING OF TOPSOIL OR BOXING.

E APPROVED FOR CONSTRUCTION
 D AMENDED LOT 963 DRIVEWAY
 C AMENDED GENERAL NOTES
 B UPDATED EXTERNAL ROADS DESIGN
 A AS SUBMITTED TO COUNCIL

REVISION

DES	CHK	DATE
AR	JM	NB
28/08/19		

DES DWG CHK DATE



HEAD OFFICE: 57 MYERS STREET BENDIGO 3550 PH 03 5445 8700
 ABN 11 103 336 358 WWW.TOMKINSON.COM



SCALE 1:1,000
 LENGTHS ARE IN METRES - PAPER SIZE A3

© COPYRIGHT
 THE INFORMATION CONTAINED ON THIS DRAWING IS THE INTELLECTUAL PROPERTY OF TOMKINSON GROUP. COPYING OR USING THIS DRAWING IN WHOLE OR IN PART WITHOUT THE EXPRESS WRITTEN PERMISSION OF TOMKINSON GROUP HEREBY FORBIDDEN.
 COPYRIGHT

FS20488

OORANYA ESTATE - STAGE 9a
WHITESIDE ST - BEVERIDGE
 ROADS & DRAINAGE CONSTRUCTION PLANS
 CUT & FILL DEPTH RANGES & LOT LEVELS

MITCHELL SHIRE COUNCIL #REF
 THE CORCORIS GROUP DEVELOPMENTS PTY LTD
 DWG STATUS: PROJECT & DWG No: REF:

FOR CONSTRUCTION S148809AR04/ 05 E

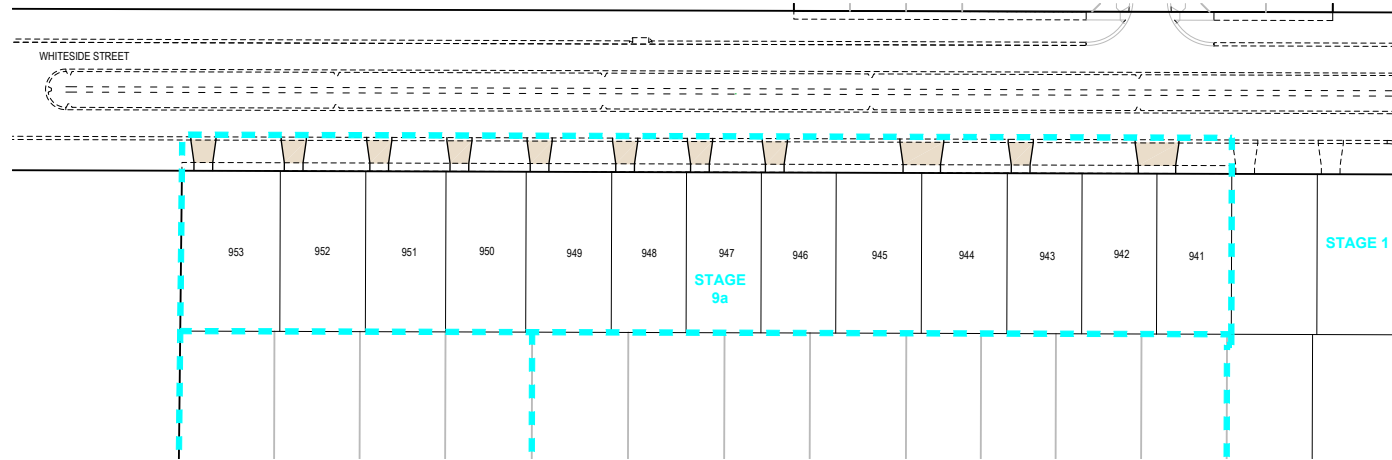
NOTE: THIS IS AN UNCONTROLLED DOCUMENT AND WILL NOT BE UPDATED. IT IS THE RESPONSIBILITY OF THE USER TO CONFIRM THAT THIS IS A CURRENT COPY AND SUITABLE FOR THE PROPOSED USE. THIS SHEET MUST BE READ IN CONJUNCTION WITH ALL SHEETS OF THIS SET AND ANY ACCOMPANYING DOCUMENTS.
 FILE: C:\12\DATA\TOM\MG50-1205\151488 - THE CORCORIS GROUP DEVELOPMENT PTY LTD, BEVERIDGE, 9 ENGINEERING DESIGN CAD\STAGE 9A\18889A_R&D CONSTRUCTION PLANS REV.DWG

CONCRETE STD SINGLE & DOUBLE DRIVEWAY PAVEMENT DETAILS (EDCM 501 - 502)		
PAVEMENT LAYER	LAYER THICKNESS (mm)	MATERIAL
1 SURFACE FINISH		BROOMED FINISH & TOOLED JOINTS. FINISHED SURFACE TO COMPLY WITH AS 4586 - SLIP RESISTANT CLASSIFICATION OF NEW PEDESTRIAN SURFACE MATERIALS
2 CONCRETE	125	CONCRETE 32MPa WITH SLAB TOP REINFORCEMENT WITH 50mm MIN. COVER.
3 BASE	50	20mm NOM. SIZE CLASS 3 FINE CRUSHED ROCK (SEE NOTE 3 BELOW)
4 SUBGRADE		SUBGRADE PREPARATION (SEE NOTE 6 BELOW). SUBGRADE IMPROVEMENT AS DIRECTED BY SUPERINTENDENT



PAVEMENT NOTES:

- A. PAVEMENT BASE COURSES ARE TO BE COMPACTED TO A MINIMUM DRY DENSITY RATIO OF 99% MODIFIED WITH MOISTURE CONTENT WITHIN ±3% OF MODIFIED OPTIMUM MOISTURE CONTENT (MOMC).
- B. PAVEMENT SUBBASE COURSES ARE TO BE COMPACTED TO A MINIMUM DRY DENSITY RATIO OF 98% MODIFIED WITH MOISTURE CONTENT WITHIN ±3% OF MODIFIED OPTIMUM MOISTURE CONTENT (MOMC).
- C. THE CAPPING LAYER SHALL BE COMPACTED TO A MINIMUM DRY DENSITY RATIO OF 98% STANDARD WITH MOISTURE CONTENT WITHIN ±3% OF STANDARD OPTIMUM MOISTURE CONTENT (SOMC).
- D. PAVEMENT LAYERS SHOULD BE PLACED AND COMPACTED IN LAYERS NOT EXCEEDING 200mm THICKNESS.
- E. SUBGRADE PREPARATION AND ENGINEERED FILL CONSTRUCTION (PAVEMENTS) TO BE IN ACCORDANCE WITH RELEVANT STANDARDS.
- F. WHEN PAVEMENT EXCAVATION IS IN ROCK, ALL LOOSE MATERIAL (INCL. ROCK & CLAY) MUST BE REMOVED. THE SUBGRADE MUST THEN BE REGULATED WITH COUNCIL APPROVED MATERIAL.
- G. PRIOR TO PLACEMENT OF THE FILL MATERIAL UNDER NEW PAVEMENT, APPROVAL OF THE MATERIAL TO BE USED MUST BE OBTAINED FROM COUNCIL.
- H. ALL SUBSURFACE DRAINS TO BE CONSTRUCTED AS PER STANDARD DRAWING EDCM 202 FOR EXPANSIVE SUBGRADES.

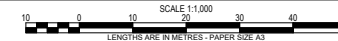


- E APPROVED FOR CONSTRUCTION
- D AMENDED LOT 963 DRIVEWAY
- C AMENDED GENERAL NOTES
- B UPDATED EXTERNAL ROADS DESIGN
- A AS SUBMITTED TO COUNCIL

REV	DES	DWG	CHK	DATE
	JM	AR		29/07/20
	JM	AR		29/07/20
	SM	AR		23/01/20
	SM	AR		17/01/20
	AR	JM	NJB	26/08/19



HEAD OFFICE: 57 MYERS STREET BENDIGO 3550 PH 03 5445 8700
 ABN 11 103 336 358 WWW.TOMKINSON.COM



© COPYRIGHT
 THE INFORMATION CONTAINED ON
 THIS DRAWING IS THE INTELLECTUAL
 PROPERTY OF TOMKINSON GROUP.
 COPYING OR IN ANY MANNER
 WITHOUT THE EXPRESS WRITTEN PERMISSION OF
 TOMKINSON GROUP HEREBY
 COPYRIGHT



FSS20488

**OORANYA ESTATE - STAGE 9a
 WHITESIDE ST - BEVERIDGE
 ROADS & DRAINAGE CONSTRUCTION PLANS
 PAVEMENT DETAILS**

MITCHELL SHIRE COUNCIL #REF
 THE CORCORIS GROUP DEVELOPMENTS PTY LTD

DWG STATUS: PROJECT & DWG No:

FOR CONSTRUCTION S148809AR05/ 05

NOTE: THIS IS AN UNCONTROLLED DOCUMENT AND WILL NOT BE UPDATED. IT IS THE RESPONSIBILITY OF THE USER TO CONFIRM THAT THIS IS A CURRENT COPY AND SUITABLE FOR THE PROPOSED USE. THIS SHEET MUST BE READ IN CONJUNCTION WITH ALL SHEETS OF THIS SET AND ANY ACCOMPANYING DOCUMENTS. PLOT DATE: 11/09/2020 FILE C:\12\DATA\TOM\MG50-1205\151488 - THE CORCORIS GROUP DEVELOPMENT PTY LTD, BEVERIDGE, 9 ENGINEERING DESIGN\CAD\STAGE 9A\5 148809A.RVD CONSTRUCTION PLANS REV.DWG